

What is the kingdom and domain of this organism?

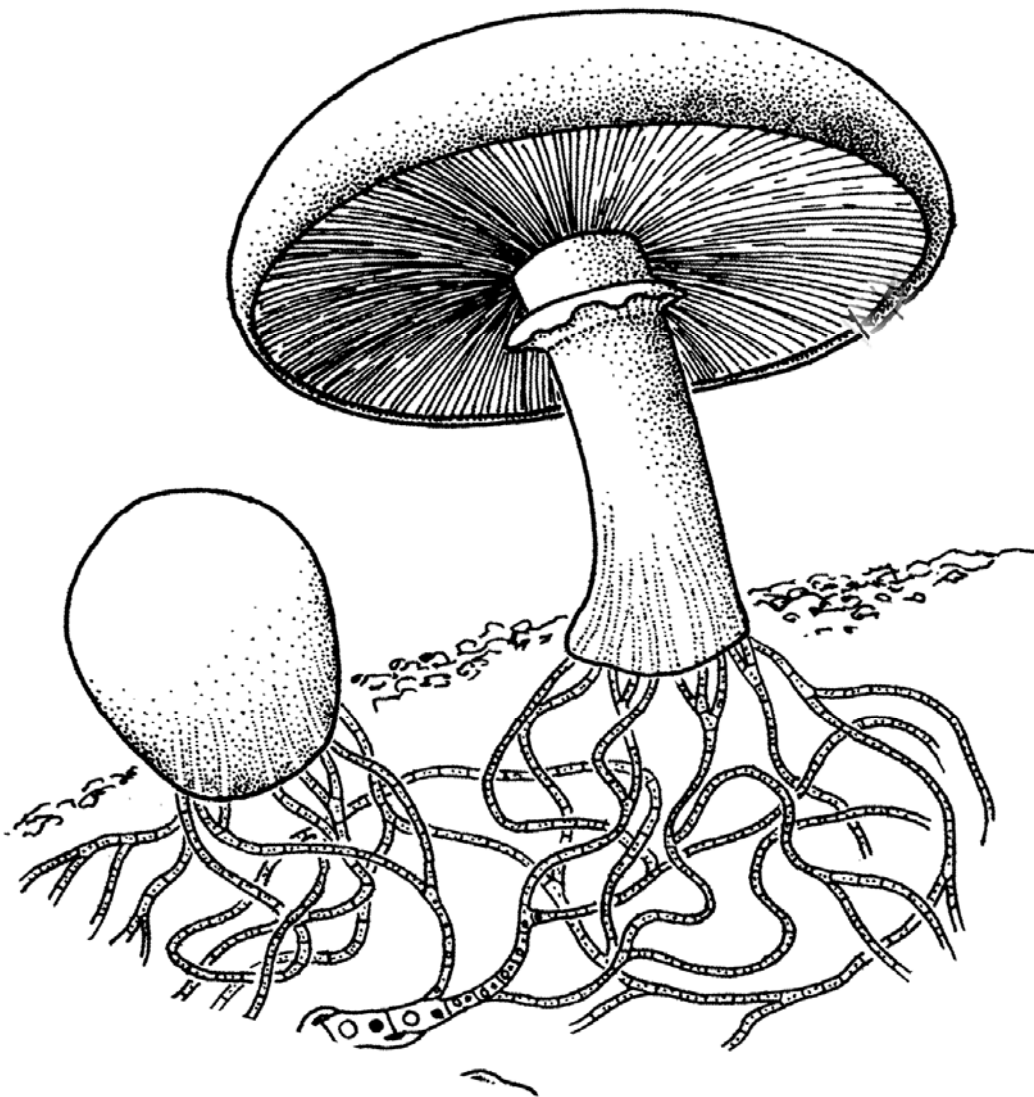
Is this organism autotrophic or heterotrophic?

How does this organism get it's food?

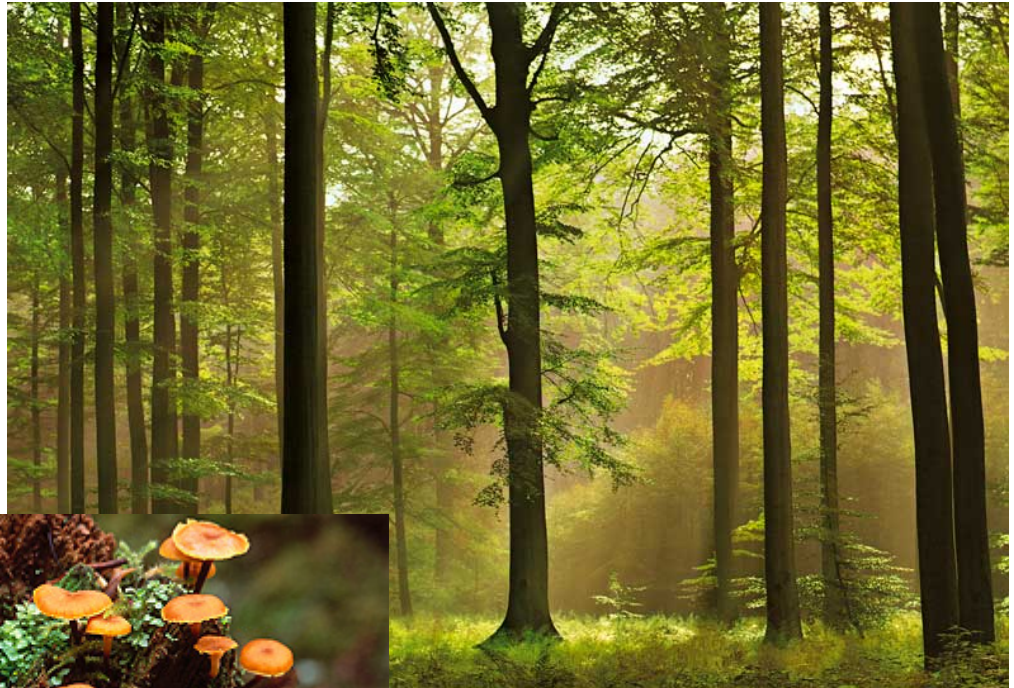
What are the unique characteristics of this kingdom?

Where is the hyphae?

Where is the fruiting body?



Name at least two ecological roles of fungi.

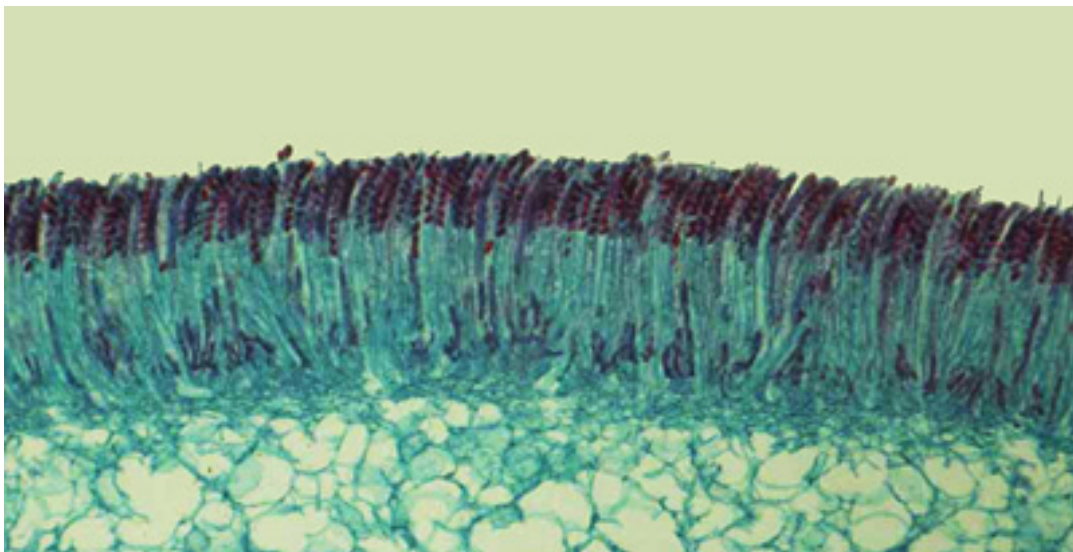
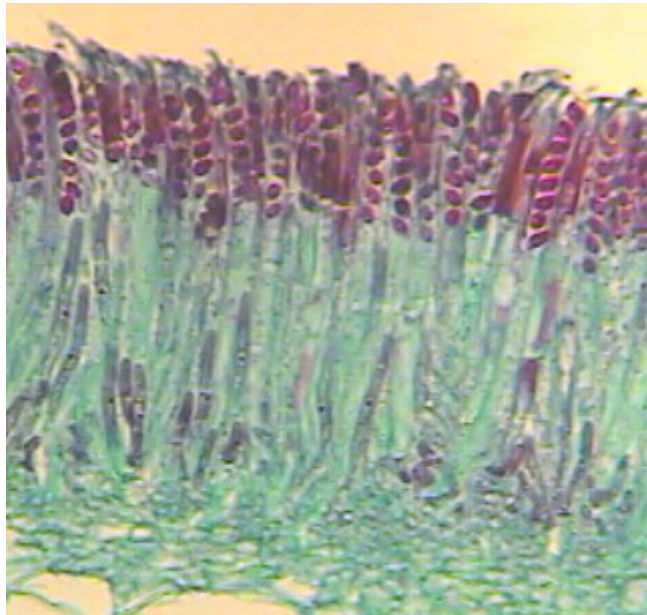


How are fungi economically valuable? Give at least three examples.



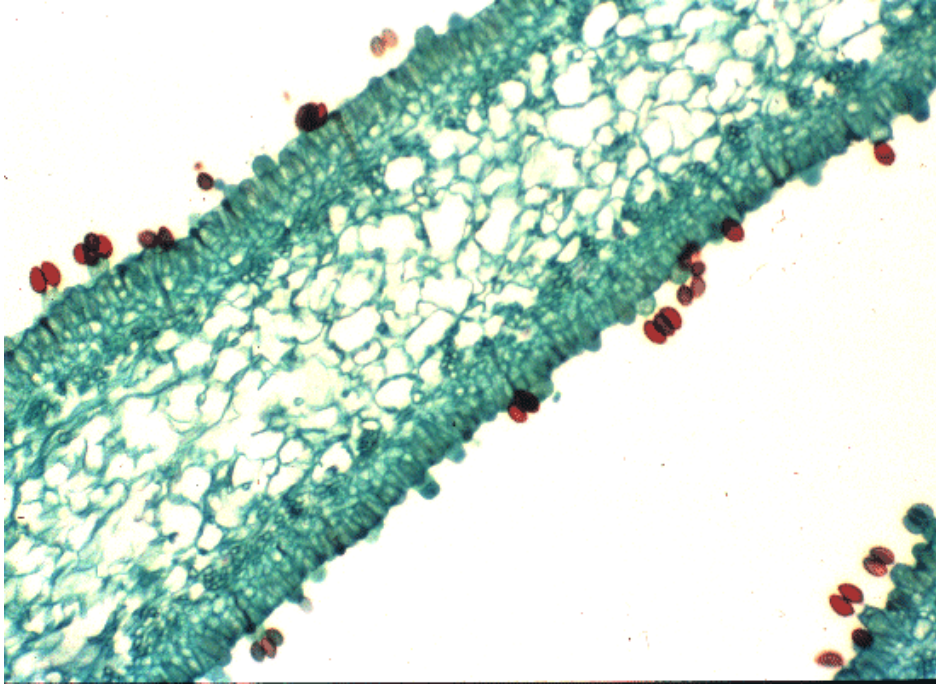
Is this a sac fungi or club fungi?

Locate the asci sacs and the spores.

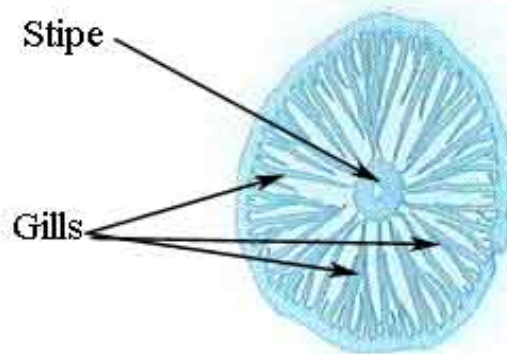


Is this a sac fungi or club fungi?

Locate the basidia (or clubs) and the spores.



Coprinus sp. Inky Cap Mushroom
40x

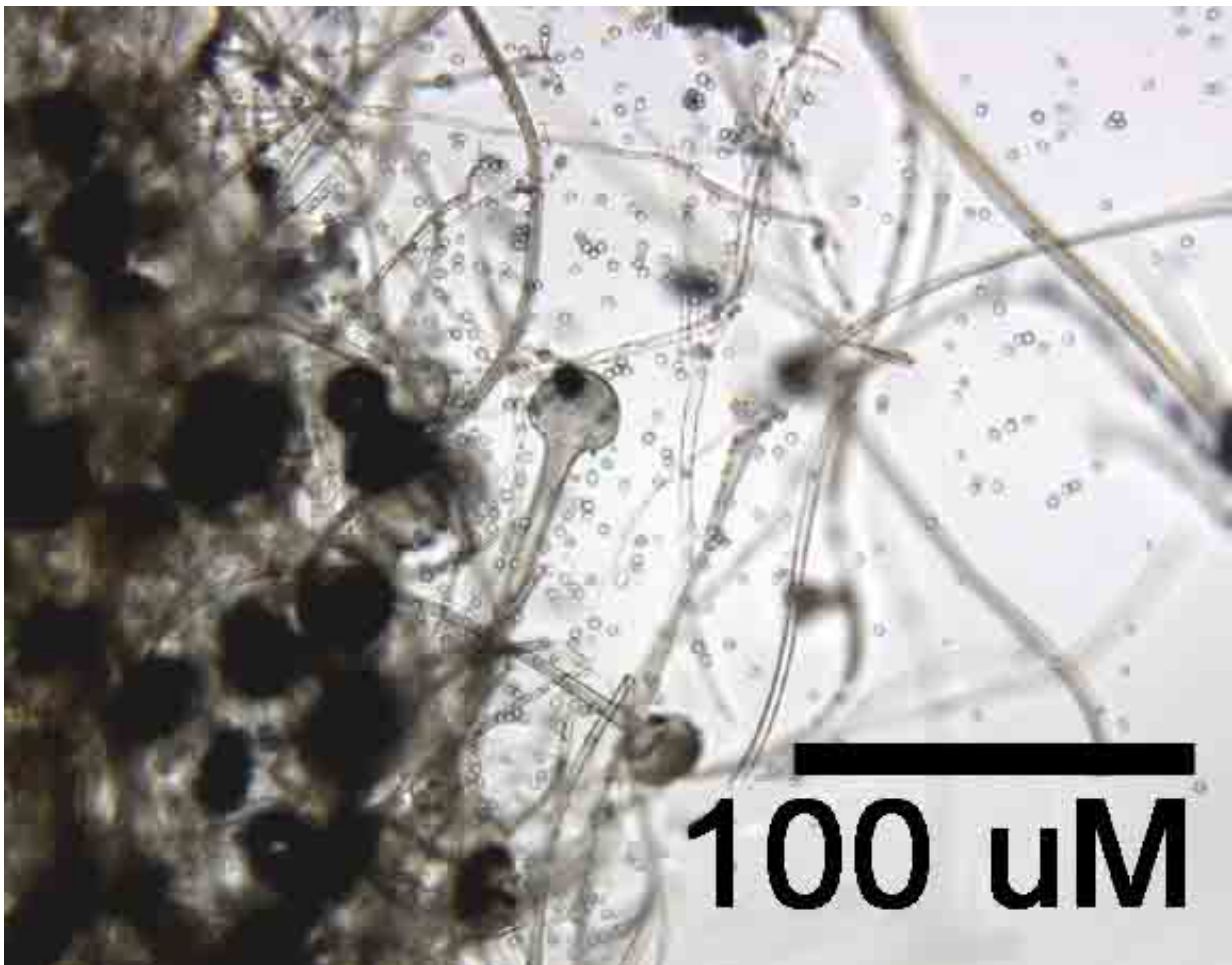


Section through the cap showing the gills
(Gills bear the basidia along their surfaces)

What is the phylum of fungi shown here?

Identify hyphae, sporangium, and spores.

Is this an example of sexual or asexual reproduction?



What are two requirements for fungal growth?



A lichen is made up of two kinds of organisms, from two different kingdoms. Name the organisms and the kingdoms.



These three pictures represent three different forms of lichens. What are they?

Which organism in a lichen is autotrophic and which is heterotrophic?

Which organisms absorbs H_2O and mineral nutrients?

Which provides sugar nutrients?

Lichen are an example of which of the following types of symbiosis:

- a) parasitic
- b) commensal
- c) mutualistic

