

ANIMAL LAB REVIEW



Identify the skulls by teeth: carnivore, herbivore, or omnivore.

Explain how you came to your conclusion. Talk about incisors, canines, and molars.

What phylum is represented by these skulls?

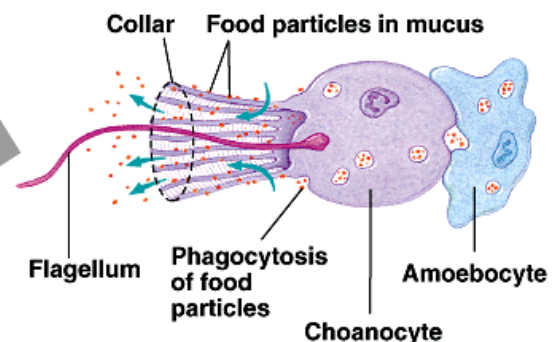
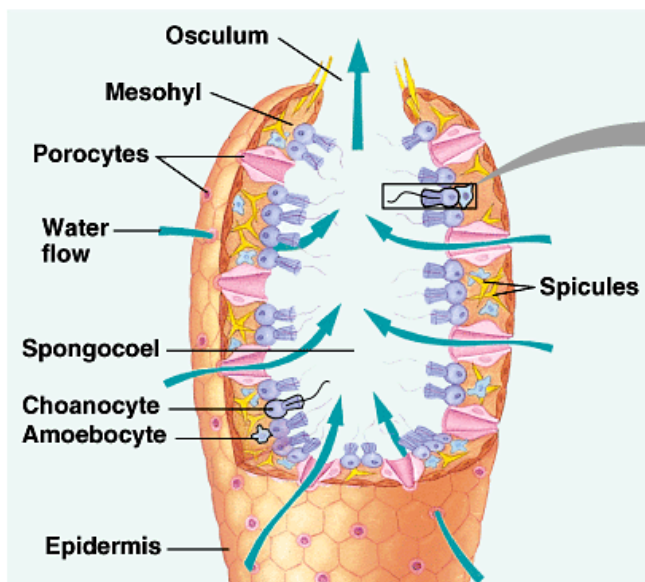
- Domain?
- Kingdom?
- Phylum?
- Classes represented?
- None, radial, or bilateral symmetry?
- Cell, Tissue or Organ level of organization?
- Complete or incomplete digestive system?
- Open or closed circulatory system?
- Surface diffusion, gills, lungs, or tracheal gas exchange?
- Hydrostatic, external, internal skeleton?
- Distinguishing features of the phylum?



- Domain?
- Kingdom?
- Phylum?
- Classes represented?
- None, radial, or bilateral symmetry?
- Cell, Tissue or Organ level of organization?
- Complete or incomplete digestive system?
- Open or closed circulatory system?
- Surface diffusion, gills, lungs, or tracheal gas exchange?
- Hydrostatic, external, internal skeleton?
- Distinguishing features of the phylum?



- Domain?
- Kingdom?
- Phylum?
- Symmetry?
- Cell, Tissue or Organ level of organization?
- Complete or incomplete digestive system?
- Open or closed circulatory system?
- Surface diffusion, gills, lungs, or tracheal gas exchange?
- Hydrostatic, external, internal skeleton?
- Distinguishing features of the phylum?



- Domain?
- Kingdom?
- Phylum?
- Classes represented?
- None, radial, or bilateral symmetry?
- Cell, Tissue or Organ level of organization?
- Complete or incomplete digestive system?
- Open or closed circulatory system?
- Surface diffusion, gills, lungs, or tracheal gas exchange?
- Hydrostatic, external, internal skeleton?
- Distinguishing features of the phylum?



Domain?

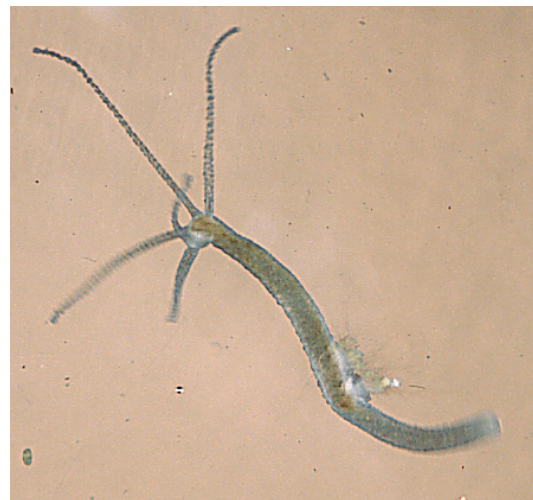
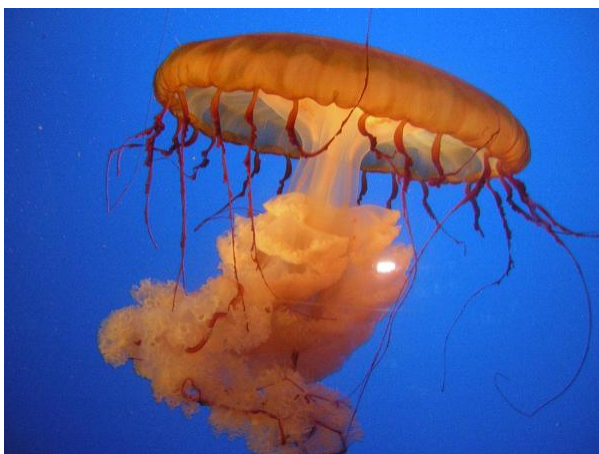
- Kingdom?
- Phylum?
- Classes represented?
- None, radial, or bilateral symmetry?
- Cell, Tissue or Organ level of organization?
- Complete or incomplete digestive system?
- Open or closed circulatory system?
- Surface diffusion, gills, lungs, or tracheal gas exchange?
- Hydrostatic, external, internal skeleton?
- Distinguishing features of the phylum?



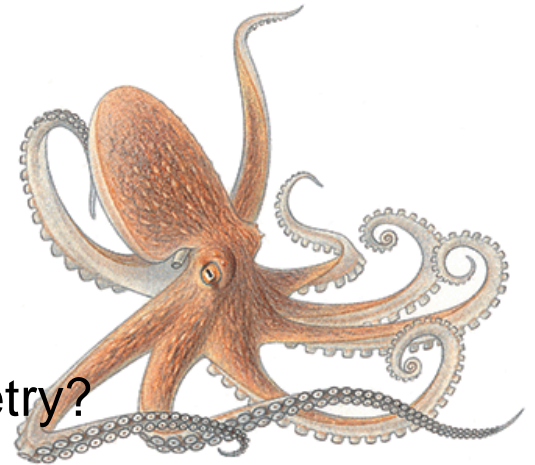
- Domain?
- Kingdom?
- Phylum?



- Classes represented?
- None, radial, or bilateral symmetry?
- Cell, Tissue or Organ level of organization?
- Complete or incomplete digestive system?
- Open or closed circulatory system?
- Surface diffusion, gills, lungs, or tracheal gas exchange?
- Hydrostatic, external, internal skeleton?
- Distinguishing features of the phylum?



- Domain?
- Kingdom?
- Phylum?



- Classes represented?
- None, radial, or bilateral symmetry?
- Cell, Tissue or Organ level of organization?
- Complete or incomplete digestive system?
- Open or closed circulatory system?
- Surface diffusion, gills, lungs, or tracheal gas exchange?
- Hydrostatic, external, internal skeleton?
- Distinguishing features of the phylum?

